

# Brush Motor Replacement Kit

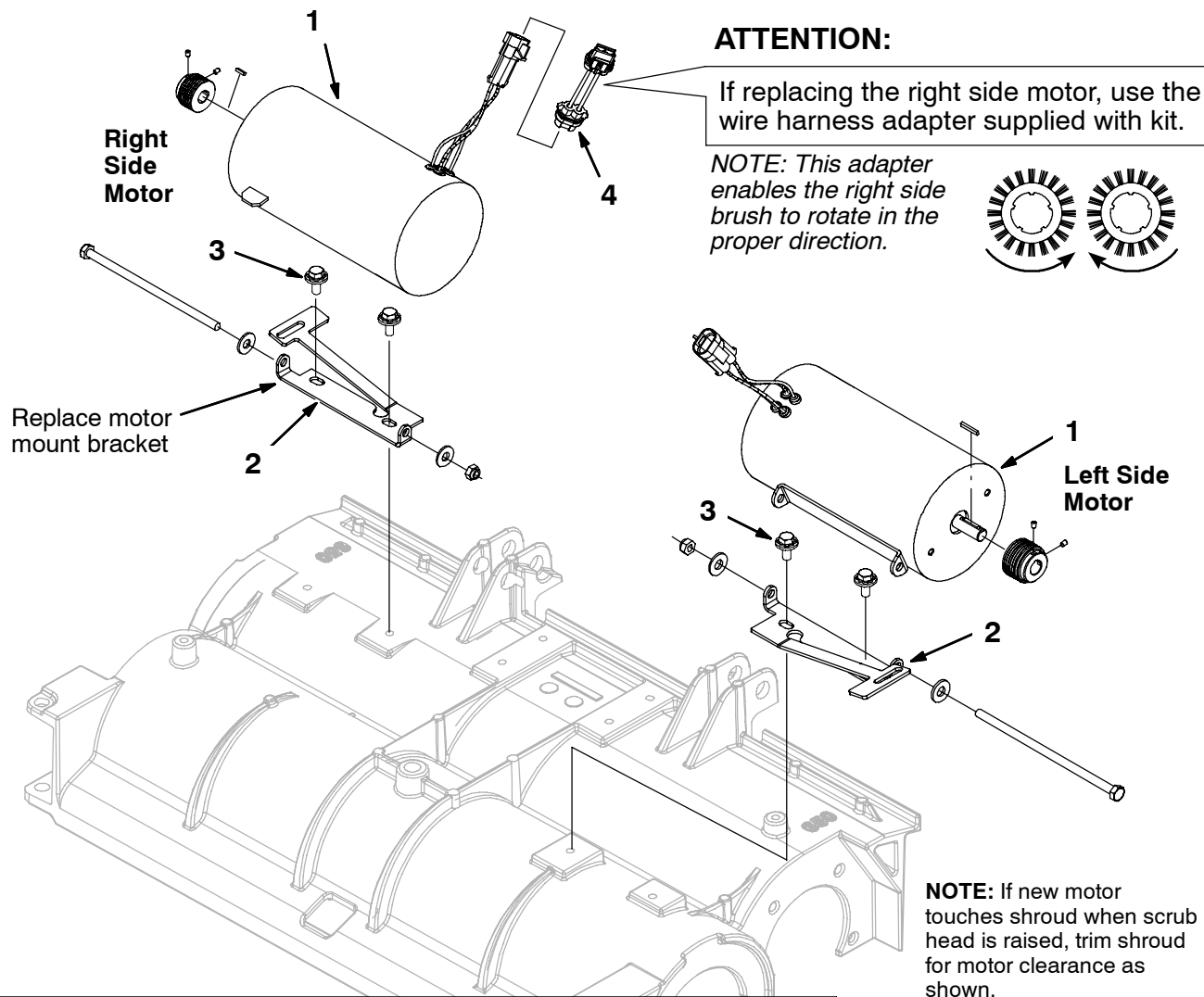
Models: T5, T5e, and Speed Scrub 24-32 Cylindrical Brush



This motor replacement kit is intended for machines manufactured before serial number 10419662. Brush motor p/n 604980 has been discontinued and replaced by this kit which includes additional parts for proper installation. Carefully follow the installation instructions below.

## INSTALLATION INSTRUCTIONS:

**⚠ WARNING: Electrical Hazard. Disconnect Battery Cables Before Servicing Machine.**



### KIT CONTENTS

Ref.	Part No.	Description	Qty.
1	1042228*	Motor, Ele, 24VDC 1500rpm 0.75hp 23A (Kit 1050369)	1
1	1050104*	Motor, Ele, 24VDC 1500rpm 0.75hp 23A (Kit 1050370)	1
2	1044386	Bracket, Mounting, Motor	1
3	1020341	Screw, Hex, M8 x 1.25 x 20 SS, Sems	2
4	1052895	Harness, Adapter, Motor (Kit 1050369)	1
4	1053363	Harness, Adapter, Motor (Kit 1050370)	1

\* For carbon brush replacement kit, order p/n 1049739 (Kit includes 4 brushes)